

Bring **versatility** to your centralized card production!

Modular system for card printing in volume

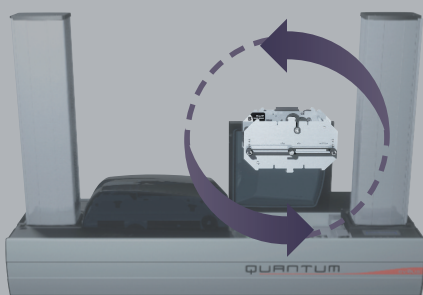
QUANTUM



The new Quantum is a powerful system to **personalize plastic cards in volume**.

It offers a centralized personalization process that matches the flexibility of a desktop printer with the power of an industrial machine. This system prints cards in dual-sided mode, in color or monochrome, and delivers more than 1,000 personalized cards per hour in monochrome, with high-definition text, logos, pictures and barcodes. This optimized throughput leverages two brand new detachable and interchangeable hoppers with a large capacity of 500 cards each (0.76 mm or 30 mil).

ADVANCED MULTIFEATURE ENCODING



Quantum comes with a detachable and reversible encoding unit that can combine the versatility of magnetic, smart contact and contactless encoders. With this exclusive feature, a card can be printed and encoded on the same side, without having to be flipped over. This speeds up the personalization. The separate encoding unit can be upgraded on-site with almost any smart chip encoder that simply needs to be connected to a dedicated electronic panel.

APPLICATIONS

Quantum is the ideal system for any organization that needs to personalize cards in large quantities, from card manufacturers to service bureaus or even banks and universities. It provides the flexibility to meet any customer requirement, in any volume, and at any time.

- ID & membership cards
- Loyalty cards
- Transport passes
- Event passes (tradeshows, concerts,...)
- Student IDs
- Payment/financial cards
- Calling cards and SIM cards



BENEFITS

■ Versatility and modularity

Quantum is a modular system and can be customized on-site by its user according to the need of the moment. Its features can be scaled to support specific and evolving requirements.

■ High performance

With Quantum, performance is the key word! The machine has different modules to speed up the personalization process and manage the printing and encoding processes at the same time. Quantum provides stunning printing performances: more than 1,000 cards per hour in monochrome and more than 150 cards per hour in color.

■ Reliability and high quality

Quantum is about reliability. All components have been engineered to support high-volume batches, while a new cleaning process and an airtight cover protect the system against dust.

■ Convenience and ease of use

Quantum is fully user-oriented. All core mechanical and electronic concepts have been designed to ease and speed up daily use and maintenance tasks.

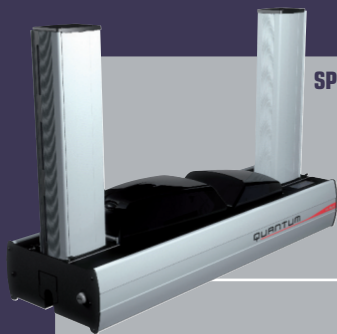
■ Affordability

Quantum takes the lead over the competition, thanks to multiple advanced concepts: it outperforms desktop printers and stands as an affordable alternative to industrial machines. Quantum brings a wealth of features at a cost-efficient price, while consumables are priced to optimize the Total Cost of Ownership.

evolIS
card printers

QUANTUM

The power of a centralized system.
The flexibility of a desktop printer. This is Quantum.



SPECIFICATIONS

- Dual-sided color printing module, 300 dpi print head (11.8 dots/mm)
- 16 MB RAM allowing two card storages (front & back)
- Interchangeable input & output hoppers, capacity of 500 cards (0.76 mm – 30 mil)
- Reject tray for 20 cards (0.76 mm – 30 mil)
- Reversible encoding module
- 2-line LCD display and status LED for printer and encoding unit monitoring
- Locking system to secure access to the whole system (cards, ribbon incl.)
- RoHS compliant
- Aluminium body, black plastic covers

PRINT MODE

- Color dye sublimation and monochrome thermal transfer
- Enhanced color management system for top quality pictures
- Edge-to-edge, dual-sided printing
- Integrated ribbon saver for monochrome printing / integrated 1/2 Panel YMCKO picture management

ENCODING MODULE

- Reversible unit for top & bottom magnetic & smart encoding (patented)
- HiCo/LoCo Magnetic stripe encoder ISO 7811 or JIS2
- Smart contact station – ISO 7816-2
- Connecting panel & mounting area for users own integration of encoding units
- Encoding options:
 - Smart encoding unit – PC/SC, EMV 2000-1
 - Contactless encoding unit – ISO14443A & B, Mifare, DesFire
 - Other types upon request

OPTIONS & ACCESSORIES

- Quantum Production Pack: 1 detachable card hopper, 2 cleaning rollers, 1 cleaning kit
- Quantum Backup Pack: 1 print head, 1 reversible encoding module, 1 detachable card hopper
- Detachable hopper with a capacity of 500 cards (0.76 mm – 30 mil)

RIBBONS

- 2-panel KO black monochrome ribbon – 500 cards/roll
- 5-panel YMCKO color ribbon – 500 cards/roll
- 6-panel YMCKO-K color ribbon – 500 cards/roll
- Half-panel YMCKO color ribbon – 400 cards/roll
- Black monochrome ribbons – up to 3,000 cards/roll
- Other ribbons – up to 1,000 cards/roll (red, green, blue, white, gold, silver, scratch-off, signature panel)
- Continuous varnish hologram – 350 cards/roll
- BlackWAX monochrome ribbon (for ABS & special varnished cards) – up to 1,000 cards/roll

PRINTING SPEED

- Color 1 side (YMCKO): 150 cards/hour
- Color 2 sides (YMCKO-K): 115 cards/hour
- Monochrome 1 side full card: 1,000 cards/hour
- Monochrome 2 sides full card: 320 cards/hour

CARD FORMAT

- ISO CR-80 – ISO 7810 (53.98 mm x 85.60 mm – 3.375" x 2.125")

CARD TYPE

- All PVC, Composite PVC cards, PET, ABS¹ and special varnished cards¹

CARD THICKNESS

- 0.5 mm to 1 mm (20 to 40 mil)

RESIDENT FONTS

- Arial 100, Arial bold 100
- Barcode – Code 39, 2/5 interleaved, Code 128, EAN13

SUPPORTED PLATFORMS

- Windows™ XP and Vista, 32 & 64 bits
- Macintosh™ OS X v10.4 and higher (upon request)
- Linux (upon request)

SUPPLIED SOFTWARE

- eMedia Card Designer Software for designing and editing badges:
 - Compatible with Windows™ XP and Vista 32 & 64 bits
 - Connection to Microsoft™ Excel databases

INTERFACE

- USB & Ethernet TCP-IP (USB cable supplied)

PRINTER FORM FACTOR

- Without hoppers: 215 mm (8.46") (H) x 850 mm (33.46") (L) x 300 mm (11.81") (W)
- With hoppers: 567 mm (22.32") (H) x 850 mm (33.46") (L) x 300 mm (11.81") (W)

PRINTER WEIGHT

- 21,7 kg / 47,8 lbs (18,3 kg / 40,3 lbs without hoppers)

POWER SUPPLY

- Power supply: 100-240 V AC, 50-60 Hz, 2 A
- Printer: 24 V DC, 6.25 A

ENVIRONMENTAL CONDITIONS

- Min/Max operating temperature: 15° / 30° C (59° / 86° F)
- Humidity: 20% to 65% non-condensing
- Min/Max storage temperature: -5° / +70° C (23° / 158° F)
- Storage humidity: 20% to 70% non-condensing
- Operating ventilation: free air

WARRANTY

- 1-year warranty (printer and print head), limited to 500,000 passes²

¹ Under specific conditions

² Subject to observance of specific conditions and use of Evolis consumables

EUROPE, MIDDLE-EAST, AFRICA

Evolis Card Printer · 14, avenue de la Fontaine · Z.I. Angers Beaucouzé · 49070 Beaucouzé · France
Tel: + 33 (0) 241 367 606 · Fax: + 33 (0) 241 367 612 · info@evolis.com

AMERICAS · Evolis Inc. · Fort Lauderdale · evolisinc@evolis.com

ASIA-PACIFIC · Evolis Asia Pte Ltd · Singapore · evolisasia@evolis.com

CHINA · Evolis · Sales office · Shenzhen · infochina@evolis.com

JAPAN · Evolis · Representative office · Tokyo · infojapan@evolis.com

www.evolis.com

evolis
card printers